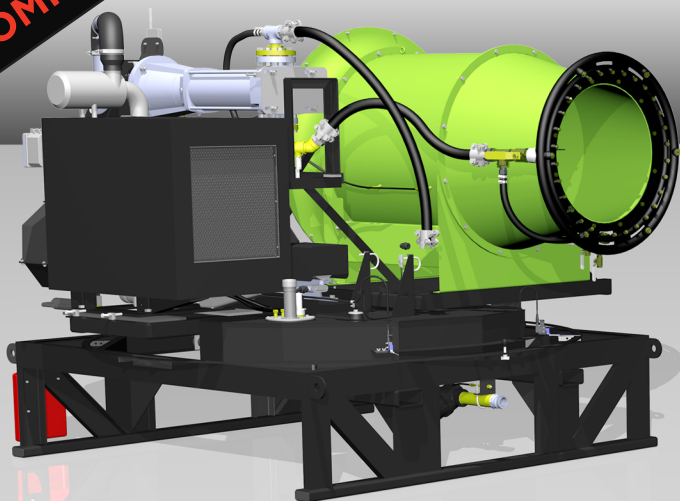


**TIER IV  
COMPLIANT!**



# THE HAWC

## HAWC SHARED SPECS

### GENERAL SPECIFICATIONS

- Oscillator gives 30-360° of reversible movement
- Electronically controlled aiming for oscillation function
- Powered adjustable angle of throw 0-35° of height adjustment minimum
- 360° of powered position adjustment
- Central lubrication where practical using Beka-Max components
- 1,000' line of sight radio remote control with complete unit emergency shutdown
- Single control point for "at machine" operation (engine and other functions)
- 5-6 gallon per hour fuel consumption

### NOISE LEVEL

- 0 ft = 104 dBA
- 12 ft = 93 dBA

### HAWC 300-100-D specs

Dimensions: 8.5'W x 8.9'L x 7'H

Weight: 7,630 LBS



- 37,500+ CFM generated by 42 HP fan
- Water throw of 300+ feet, 196,000 sq ft coverage
- In-line filter included. (80 mesh, 177 micron)
- 1/2 HP, 12 VDC oscillator motor
- 10,100 feet per minute fan outlet air velocity
- Logan electric over hydraulic clutch
- Murphy electronic controls

\*Water mist throw distance based on 1,000 ft elevation testing

### PRIMARY (30) NOZZLE RING

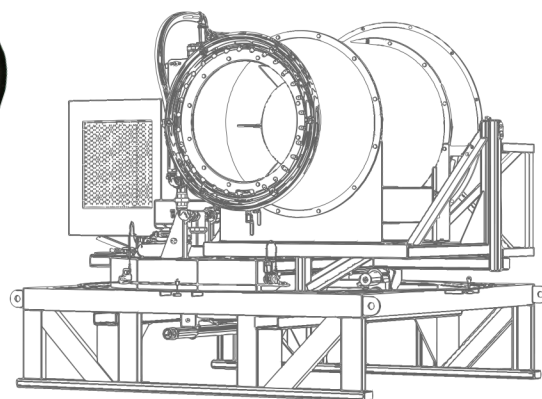
WATER PRESSURE (PSI)	40	60	80	100	120	140	150
WATER FLOW (GPM)	12.0	14.6	16.9	18.9	21.0	22.5	23.3

### SECONDARY (6) NOZZLE RING

WATER PRESSURE (PSI)	40	60	80	100	120	140	150
STANDARD WATER FLOW (GPM)	30	37	43	47	52	55	57
OPTIONAL WATER FLOW (GPM)	60	73	85	95	104	111	114

### Cummins QSF3.8L Tier 4F Diesel Engine

- 100 HP continuous duty, EPA Tier IV Diesel
- 306 lb-ft (415 N-m) @1600 RPM
- 232 in<sup>3</sup> (3.8L) displacement
- Turbocharged, charge air cooled, & EGR
- 16.9:1 compression ratio
- Bosch HPCR fuel system
- 50 gallon fuel tank



## WATER SPECIFICATIONS

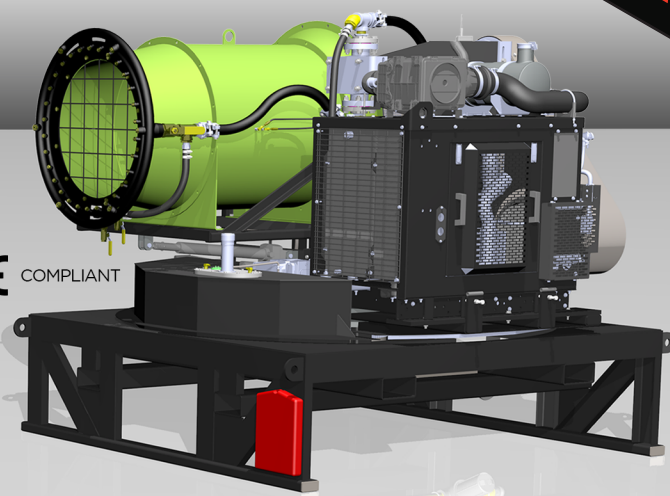
- 30 brass nozzles on primary water ring
- 6 brass nozzles on secondary soaking ring
- Separate ball valve control for each water ring
- Quick disconnect water inlet fitting 2" diameter
- Water boosted by 150 PSI after going through booster pump

## POWER SPECIFICATIONS

- Electrical components 12 VDC
- 1.0 RPM rotation speed for oscillation
- 1/3 HP, intermittent duty, 12 VDC throw adjustment motor



COMPLIANT



## HAWC 250-65-D specs

Dimensions: 7.5'W x 8'L x 7.1'H

Weight: 6,700 LBS

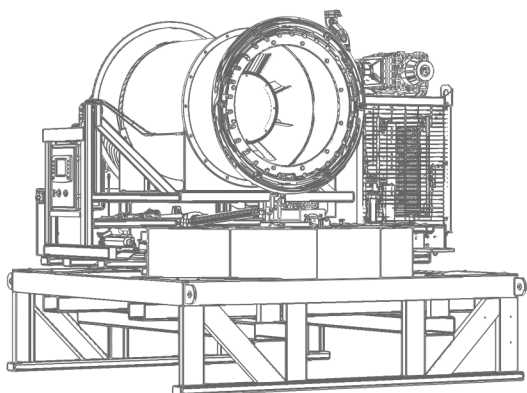
- 30,000+ CFM generated by 42 HP fan
- Water throw of 250+ feet, 126,000 sq ft coverage
- In-line filter included. (80 mesh, 177 micron)
- 1/3 HP, 12 VDC oscillator motor
- 8,500 feet per minute fan outlet air velocity
- Single control point for "at machine" operation (engine and other functions)
- Logan electric over hydraulic clutch
- Murphy electronic controls

## PRIMARY (30) NOZZLE RING

WATER PRESSURE (PSI)	40	60	80	100	120	140	150
WATER FLOW (GPM)	10.0	12.3	14.1	16.0	17.5	18.7	19.2

## SECONDARY (6) NOZZLE RING

WATER PRESSURE (PSI)	40	60	80	100	120	140	150
STANDARD WATER FLOW (GPM)	28	32	36	40	43	46	48



## Cummins QSF2.8L Tier 4 Diesel Engine

- 65 HP continuous duty, EPA Tier IV Diesel
- 199 lb-ft (270 N-m) @1600 RPM
- 171 in<sup>3</sup> (2.8L) displacement
- Turbocharged, charge air cooled, & EGR
- 16.9:1 compression ratio
- Bosch HPCR fuel system
- 50 gallon fuel tank