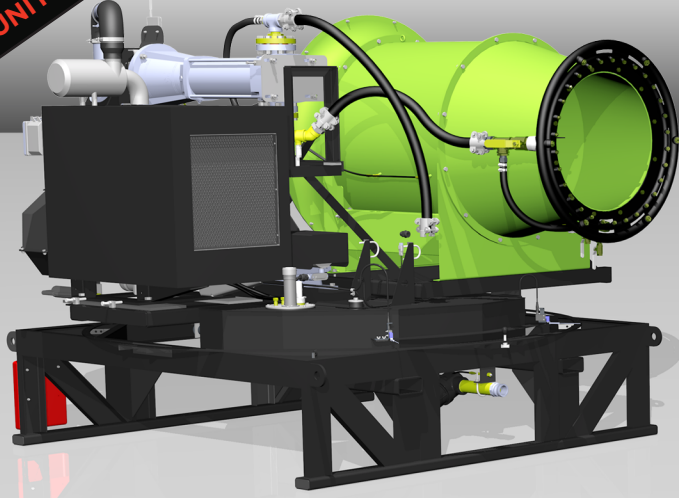


ELECTRIC
UNIT AVAILABLE

THE HAWC THE HAWC

TIER IV
COMPLIANT!



HAWC 300-80-D specs

- Dimensions: 8.5'W x 8.9'L x 7'H
Weight: 5,900 LBS
- 37,500+ CFM generated by 42 HP fan
 - Water throw of 300+ feet, 196,000 sq ft coverage
 - In-line filter included. (80 mesh, 177 micron)
 - 1/2 HP, 12 VDC oscillator motor
 - 10,100 feet per minute fan outlet air velocity

HAWC SHARED SPECS

GENERAL SPECIFICATIONS

- Oscillator gives 30-360° of movement
- Electronically controlled aiming for oscillation function
- Powered adjustable angle of throw 0-35° of height adjustment minimum
- 360° of powered position adjustment
- Central lubrication where practical using Beka-Max components
- 1,000' line of sight radio remote control
- Single control point for "at machine" operation (engine and other functions)
- 5-6 gallon per hour fuel consumption

NOISE LEVEL

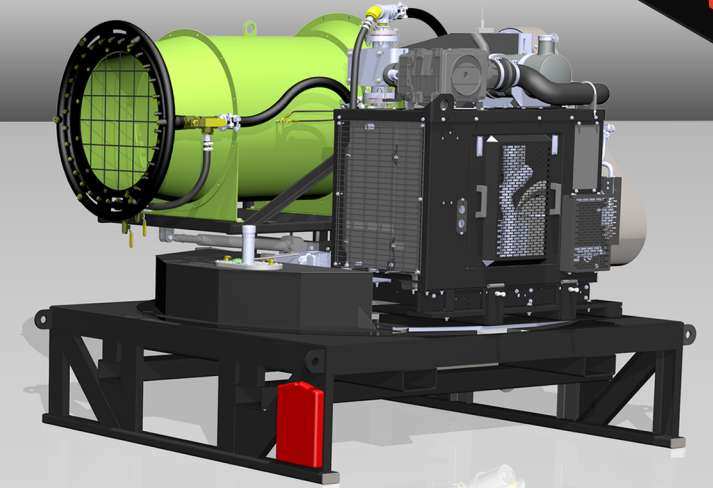
- 0 ft = 104 dBA
- 12 ft = 93 dBA

WATER SPECIFICATIONS

- 30 brass nozzles on primary water ring
- 6 brass nozzles on secondary soaking ring
- Separate ball valve control for each water ring
- Quick disconnect water inlet fitting 2" diameter
- Water boosted by 150 PSI after going through booster pump

POWER SPECIFICATIONS

- Electrical components 12 VDC
- 1.0 RPM rotation speed for oscillation
- 1/3 HP, intermittent duty, 12 VDC throw adjustment motor



HAWC 250-65-D specs

- Dimensions: 7.5'W x 8'L x 7.1'H
Weight: 6,700 LBS
- 30,000+ CFM generated by 42 HP fan
 - Water throw of 250+ feet, 126,000 sq ft coverage
 - In-line filter included. (80 mesh, 177 micron)
 - 1/3 HP, 12 VDC oscillator motor
 - 8,500 feet per minute fan outlet air velocity
 - Single control point for "at machine" operation (engine and other functions)

PRIMARY (30) NOZZLE RING

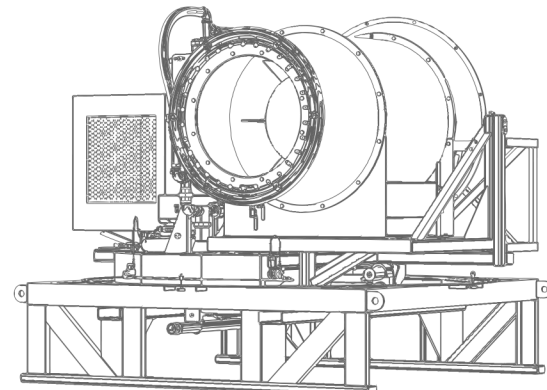
WATER PRESSURE (PSI)	40	60	80	100	120	140	150
WATER FLOW (GPM)	12.0	14.6	16.9	18.9	21.0	22.5	23.3

SECONDARY (6) NOZZLE RING

WATER PRESSURE (PSI)	40	60	80	100	120	140	150
STANDARD WATER FLOW (GPM)	30	37	43	47	52	55	57
OPTIONAL WATER FLOW (GPM)	60	73	85	95	104	111	114

Yanmar Tier 3 (III) Diesel Engine

- 4 cycle, in-line, water-cooled diesel
- 80 HP (60 kW) @ 2500 RPM
- 272 lb-ft (270 N-m) @ 1850 RPM
- 3.319L displacement
- EPA Tier 3, EC(NRMM) Stage III regulation
- 18.1:1 compression ratio
- Yanmar YPD-MP4 fuel system
- 55 gallon fuel tank



PRIMARY (30) NOZZLE RING

WATER PRESSURE (PSI)	40	60	80	100	120	140	150
WATER FLOW (GPM)	10.0	12.3	14.1	16.0	17.5	18.7	19.2

SECONDARY (6) NOZZLE RING

WATER PRESSURE (PSI)	40	60	80	100	120	140	150
STANDARD WATER FLOW (GPM)	28	32	36	40	43	46	48

Cummins QSF2.8L Tier 4 (IV) Diesel Engine

- 65 HP continuous duty, EPA Tier IV Diesel
- 199 lb-ft (270 N-m) @1600 RPM
- 171 in³ (2.8L) displacement
- Turbocharged, charge air cooled, & EGR
- 16.9:1 compression ratio
- Bosch HPCR fuel system
- 50 gallon fuel tank

